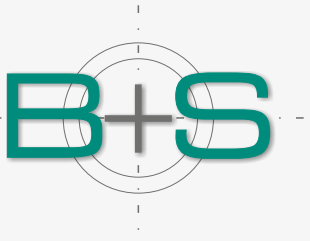


B+S

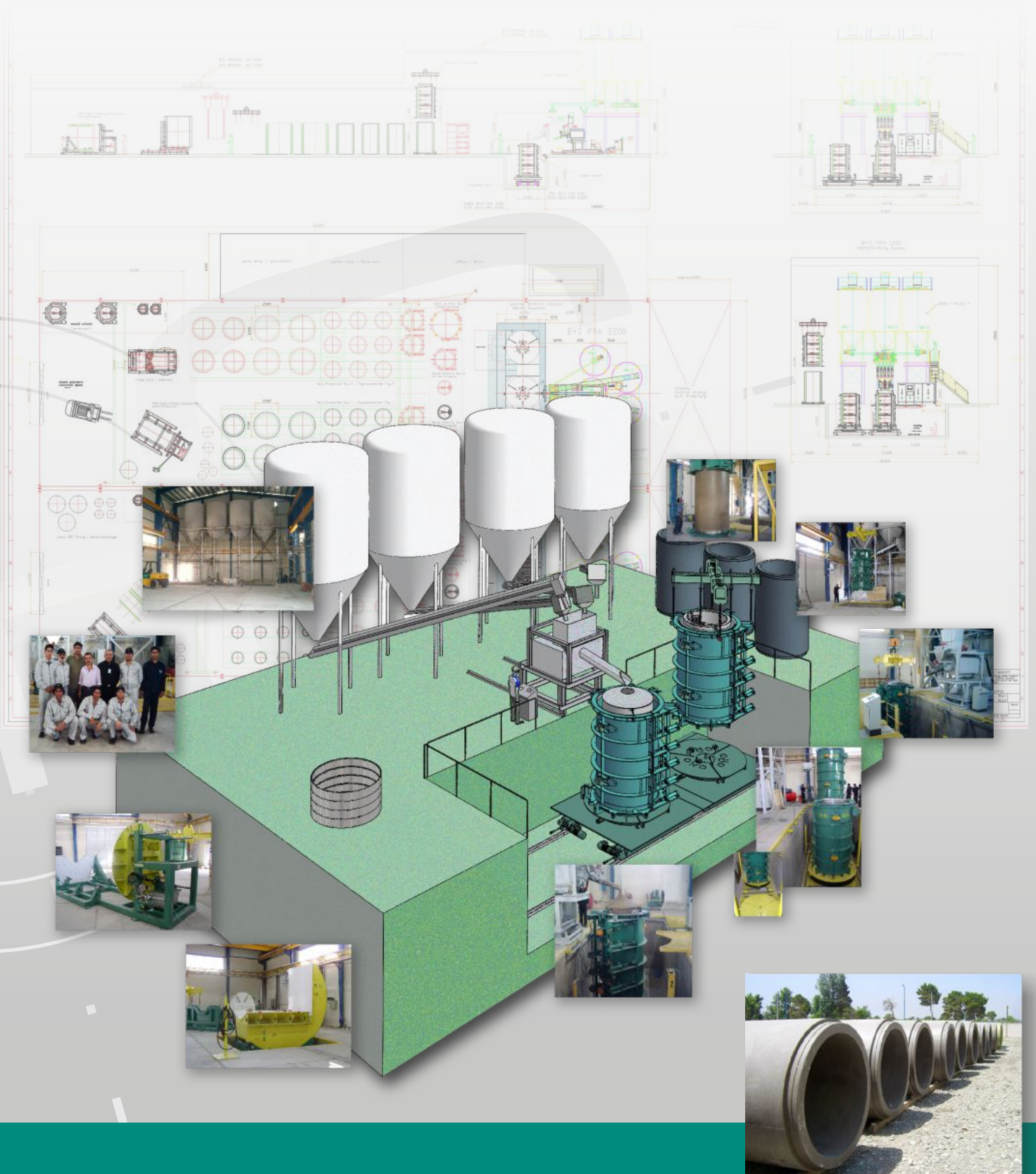
We shape concrete

Machines, moulds and special equipment
for concrete precasting industry

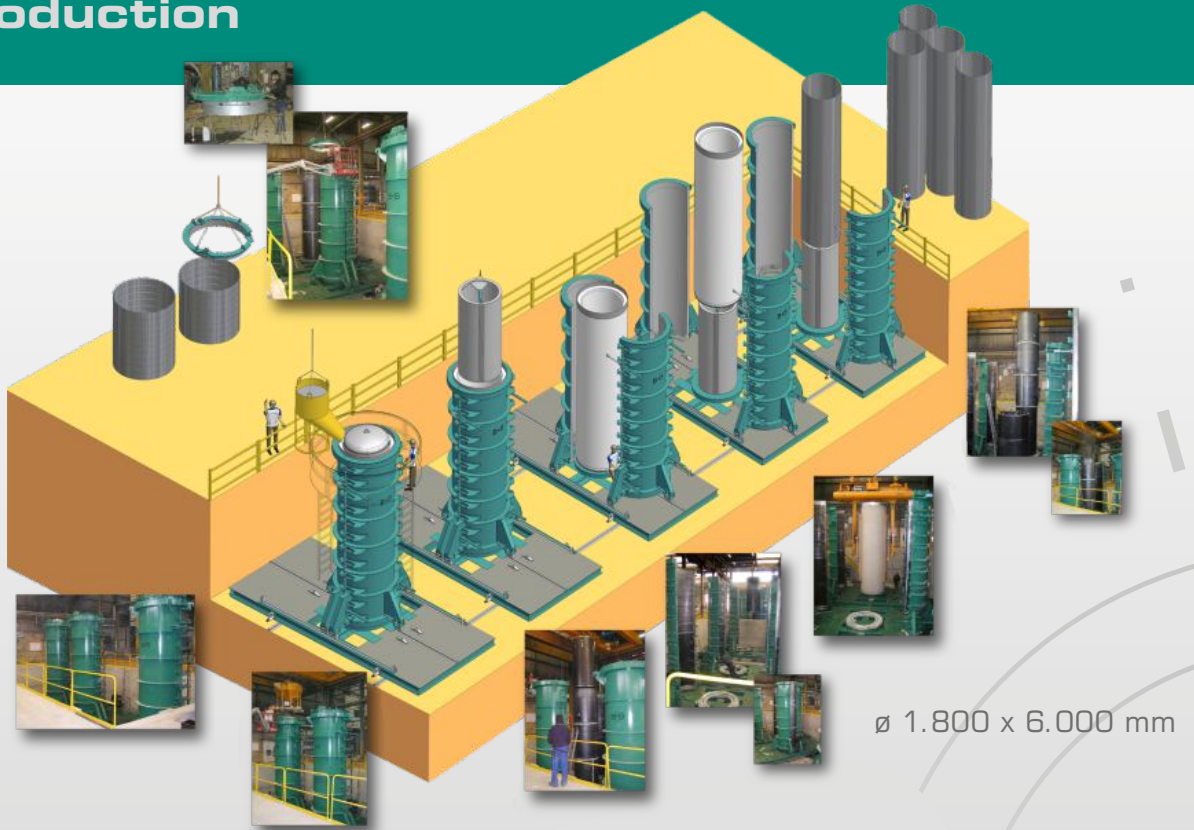




Polymer concrete pipe production



High pressure concrete pipe production



Prestressed high pressure concrete pipes



Jacking pipe production



Jacking pipes
ø 1.600 - 2.800 x 4.000 mm

Big pipe / box culvert production



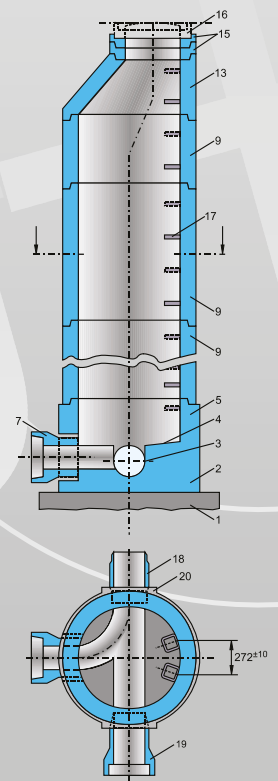
RPM 3000

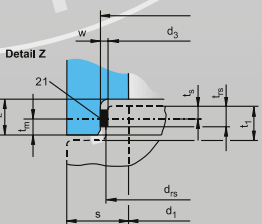
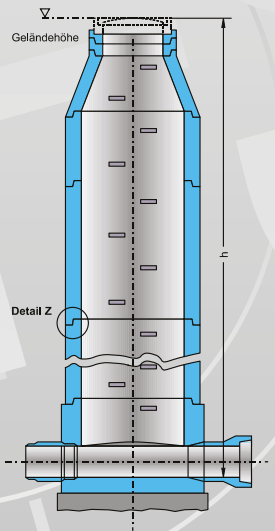
Maximum precast dimension
ø 3.200 x 3.000 mm

Machine for production of manhole systems

SPM-1200/1500/2000

- Manhole base
- Manhole ring
- Manhole cone





Machine for production of concrete tanks

BPM-2500/3000

Usable as

- water tank
- septic tank
- waste water treatment system



Maximum precast dimension:
ø 3.000 x 3.000 mm



Concrete tank
ø 2.500 mm

Manhole/Tank production "wetcast"

3 chamber tanks



ø 1.500 x 3.000 mm

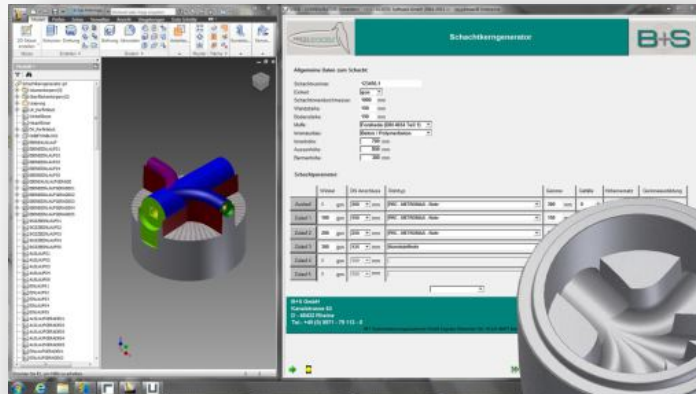


Dimensions 1.500 x 1.500 x 3.000 mm



PECO-SYSTEM[®]

Flexible Production of Concrete Manhole Systems



Manhole configurator



Milling job start



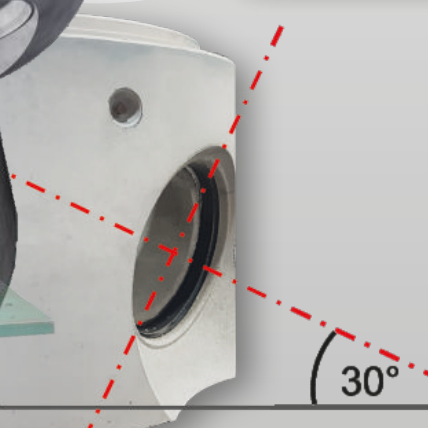
Coating / Connection of hole former



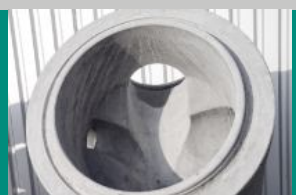
Equipment for production of monolithic manhole bases



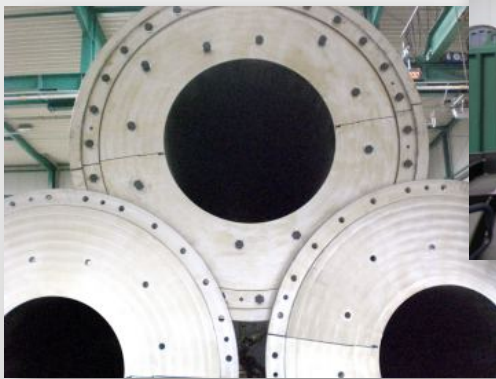
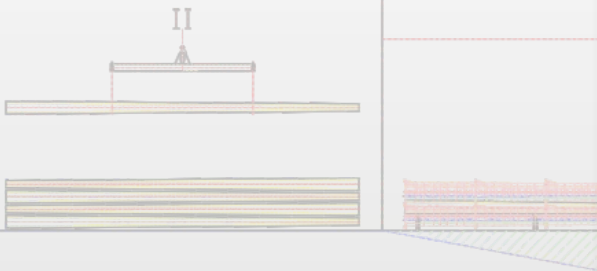
Demoulding



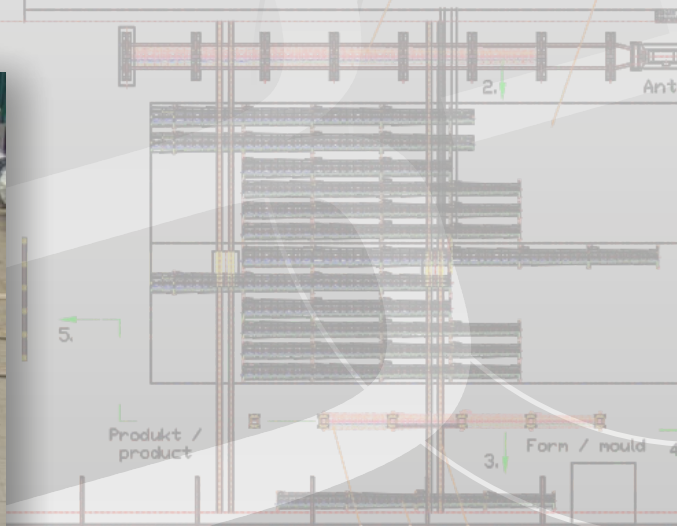
Turning concrete element



Equipment for production of prestressed concrete poles and posts produced in centrifugal process



Final inspection/delivery



Mould for concrete poles





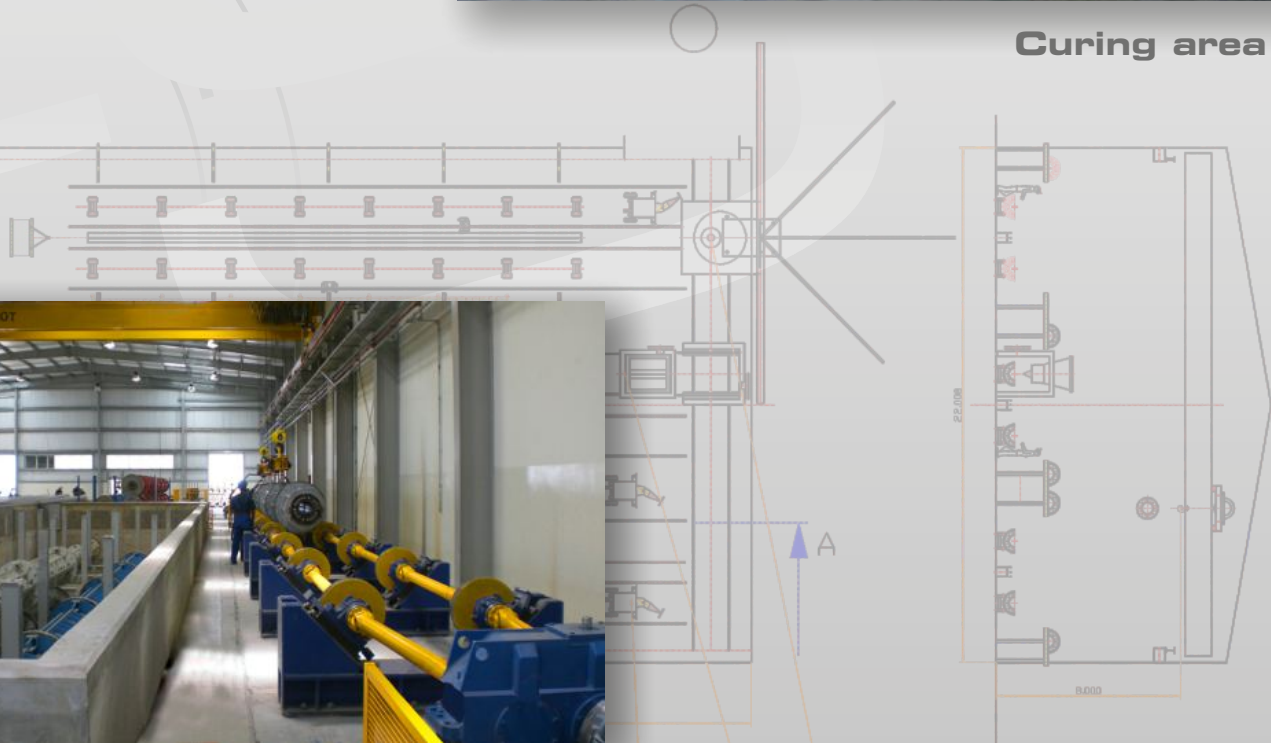
Concrete feeding



Curing area



Schleudieranlage

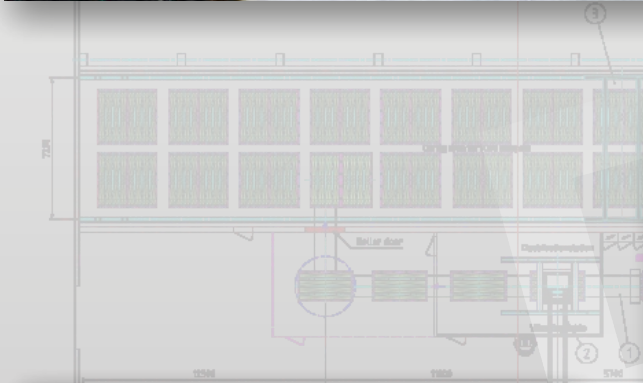
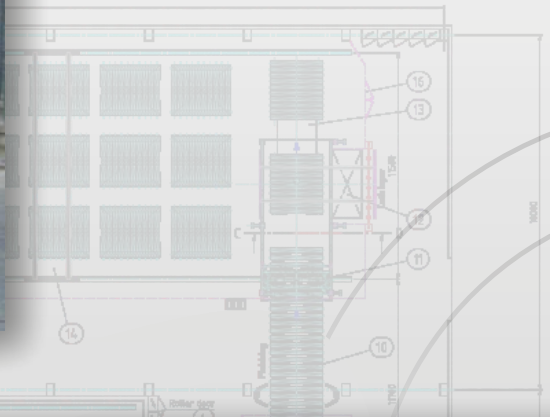


CAROUSEL SYSTEM

Production equipment for manufacturing of prestressed sleepers



Handling of sleepers



Quad mould



LongLine System for production of prestressed concrete turnout and track sleepers



Tension wire arrangement



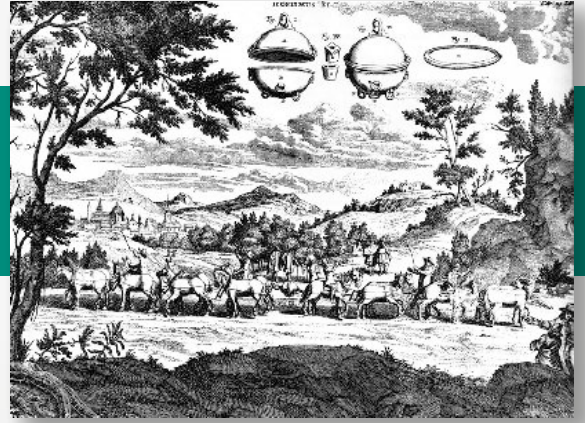
Concrete feeding



Splitting system



Vacuum lifting technology



Concrete pipe handling max. 40 t

Steel pipe handling



Tunnel segment handling max. 10 t

Handling precast elements



Vacuum lifting technology



**Tank handling
max. 12 t**



**Frame Handling
max. 20 t**



Variable mould equipment for box culvert production



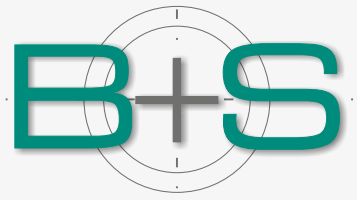
Maximum dimension:
7.000 x 3.000 x 2.760 mm



Special equipment according to customer specification



Made in Germany



B + S is your strong partner, when it comes to the production of molds and machines for the precast concrete industry. As an owner-managed company, we offer you the highest flexibility in order processing, sales, development and design, as well as production, service and training.

Our experience makes us a first-class supplier of concrete plants. In-house expertise is our key to quality without compromise. – *That's what our team stands for!*

B+S forms and systems meet the highest customer demands – *That's what we live for!*

Motivation, reliability and commitment are the foundation for trusting cooperation with our business partners – *let us convince you!*



Machines and **moulds** for manufacturing of:

- Concrete pipes
- Polymer concrete pipes
- Concrete box culverts
- Concrete manhole systems
- Concrete tanks
- Prestressed concrete poles
- Prestressed concrete sleepers
- Special concrete elements
- Vacuum lifting technology



B+S Engineering GmbH
Kanalstraße 63
D-48432 Rheine

Tel. +49 5971 79113 - 0
Fax +49 5971 79113 - 19
www.bs-eng.de

